



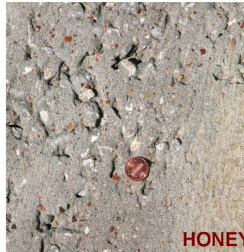
Marty's FlexKrete Job Tips

"FlexKrete makes it possible now!"

11/12/2013, VOL V

REPAIR "HONEYCOMB"?

In April of 2008, McCarthy Construction called and asked if we would help them with a problem they had on a brand new bridge that they were completing. What we found was "honeycombing" covering a large portion of the new bridge deck. This probably is normally caused by moisture or improper settling of the mortar around the aggregate. Usually, this is not a real structural problem, but on the deck of a new bridge, it could hardly be acceptable. And, indeed, the DOT was discussing a repour for the entire deck, at phenomenal expense! The question was, can these thousands of small craters be repaired permanently? Within a couple of days the tining machine would cut gooves, possibly 1/8" wide and 1/4" deep across the entire deck. So, would a cementitious material or a brittle epoxy, or any other product, withstand the impact of the blade, or would they crack and pop out of each tiny hole. The answer was obvious. It had to be a special product, exhibiting tenacious adhesion, impact resistance, and high compressive values, as well as resiliency. The whole job was saved with three gallons of FlexKrete!-5 years now.



HONEYCOMBING



DAUB EACH CRATER WITH FLEXPRIME



SQUEEGEE FLEXKRETE

FLEXKRETE FEATURES:

- Adhesion--Pulls concrete
- Traffic--As quickly as 15 minutes
- Compressive Strength >10,000 psi
- Resiliency--DOT tests @ 99%
- Tensile Modulus (ASTM D 790) 182,000 psi
- Tensile Strength (ASTM D 638) 3,530 lb/in²
- Flexural Strength (ASTM D 790) 7,340 lb/in²
- Flexural Modulus (ASTM D 790) 390,000 psi
- Elongation % (ASTM D 638) 30%
- Hardness-Shore D (ASTM D 2240) 79



LIGHT COLORED AREAS SHOW FLEXKRETE